

CRUIS'N EXOTICA TM

S E C T I O N FOUR

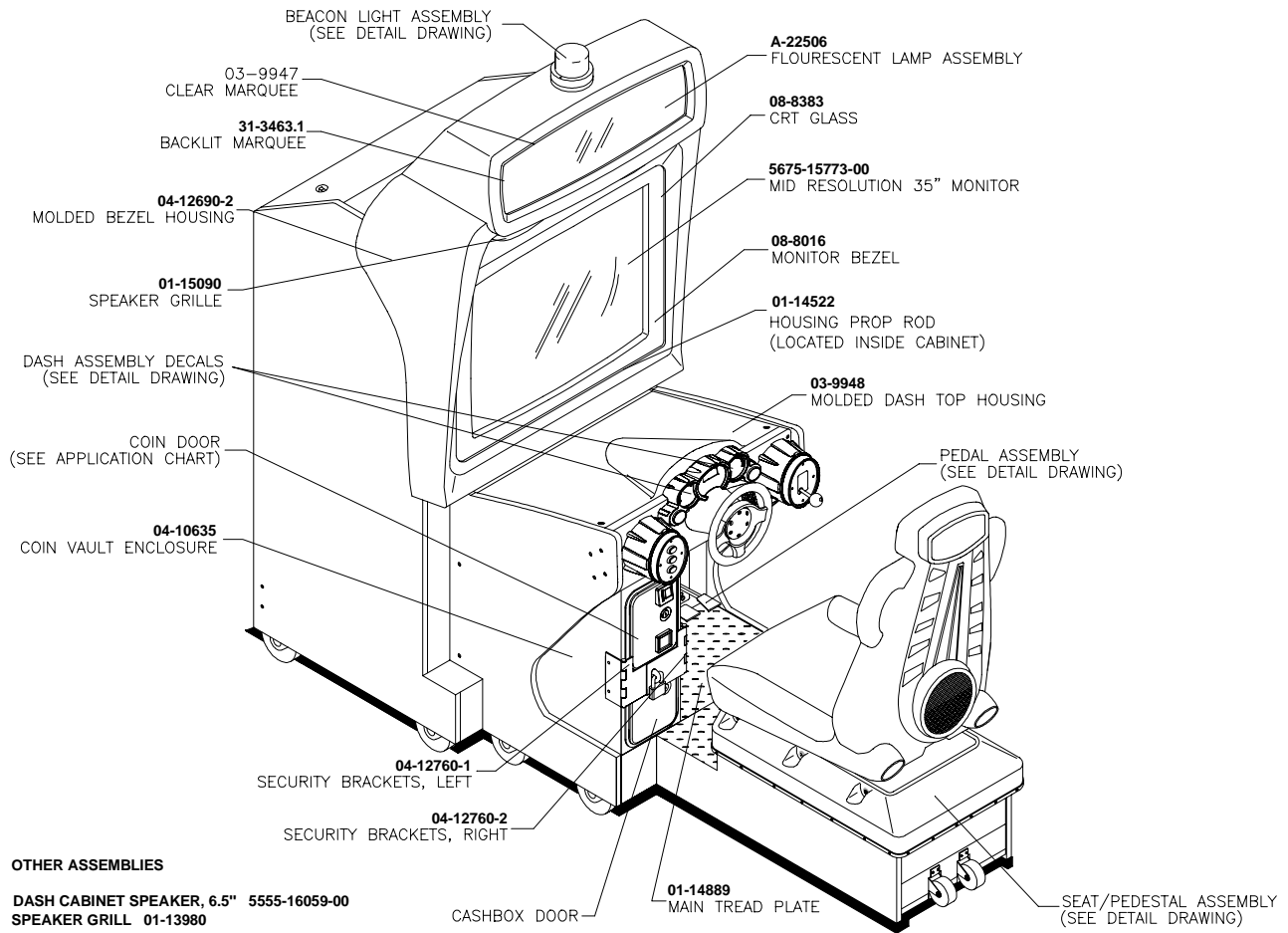
PARTS

WARNING

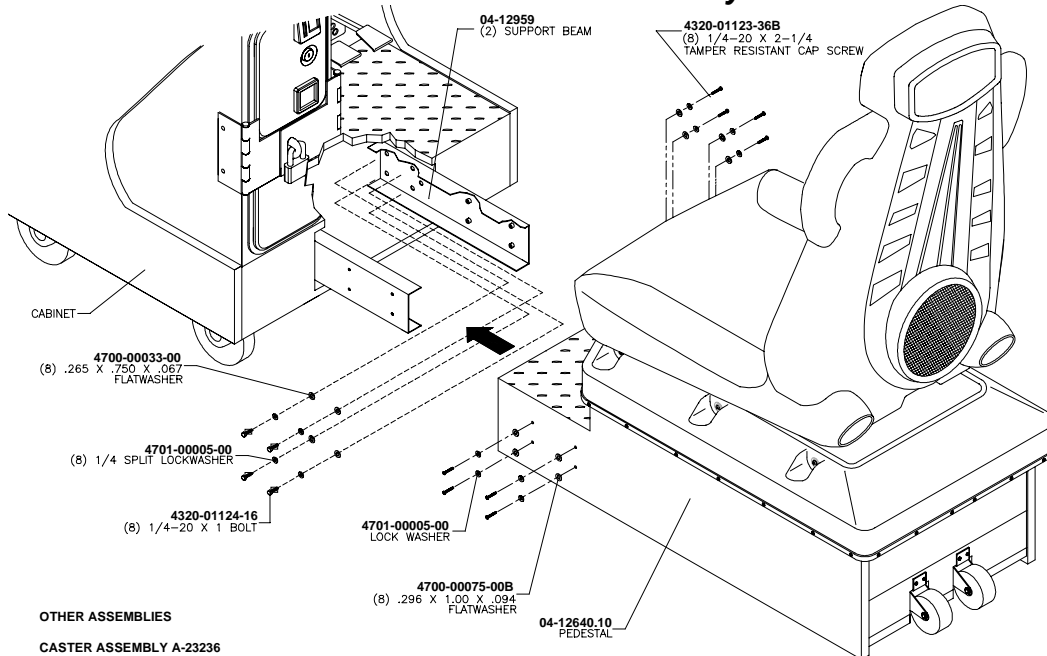
USE OF NON-MIDWAY PARTS OR CIRCUIT MODIFICATIONS MAY CAUSE SERIOUS INJURY OR EQUIPMENT DAMAGE! USE ONLY MIDWAY AUTHORIZED PARTS.

- For safety and reliability, substitute parts and modifications are not recommended.
- Substitute parts or modifications may void EMC directive or FCC type acceptance.

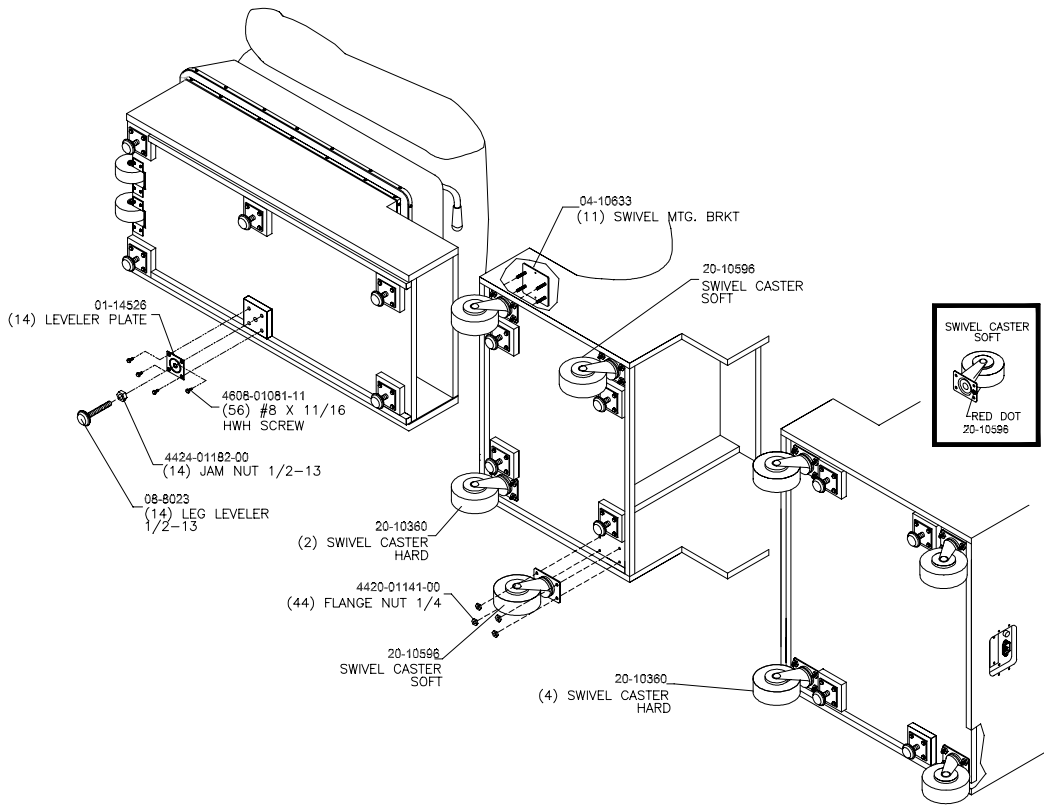
Cabinet Front View



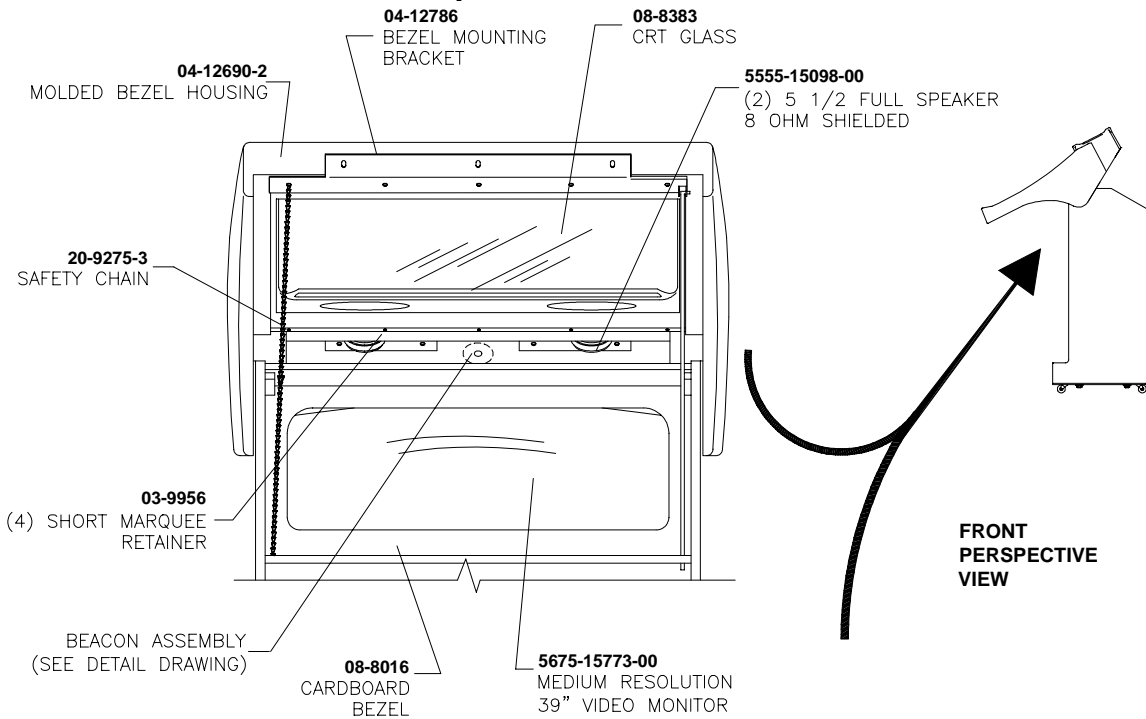
Motion Pedestal Assembly



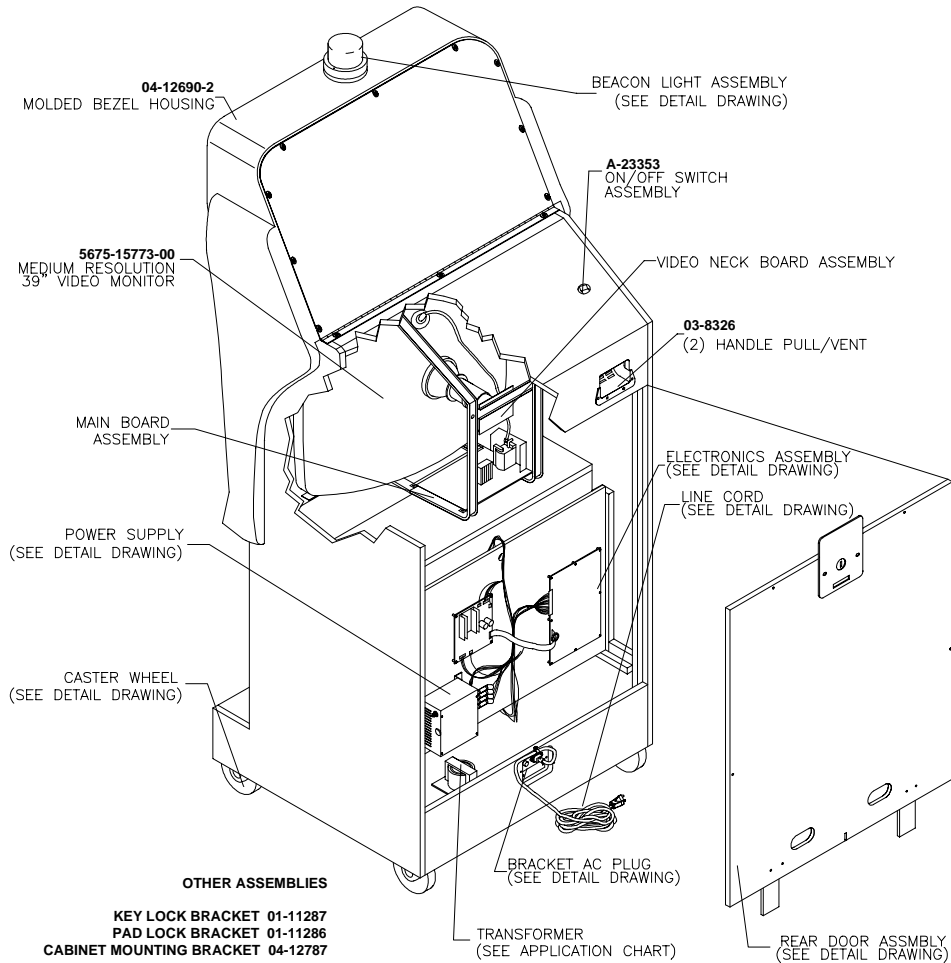
Caster & Leveler Assemblies



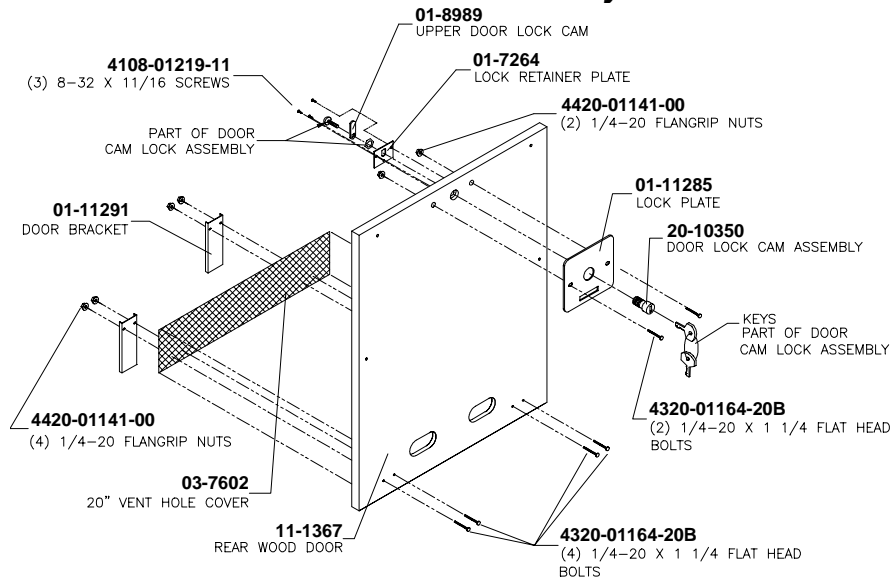
Marquee Interior View



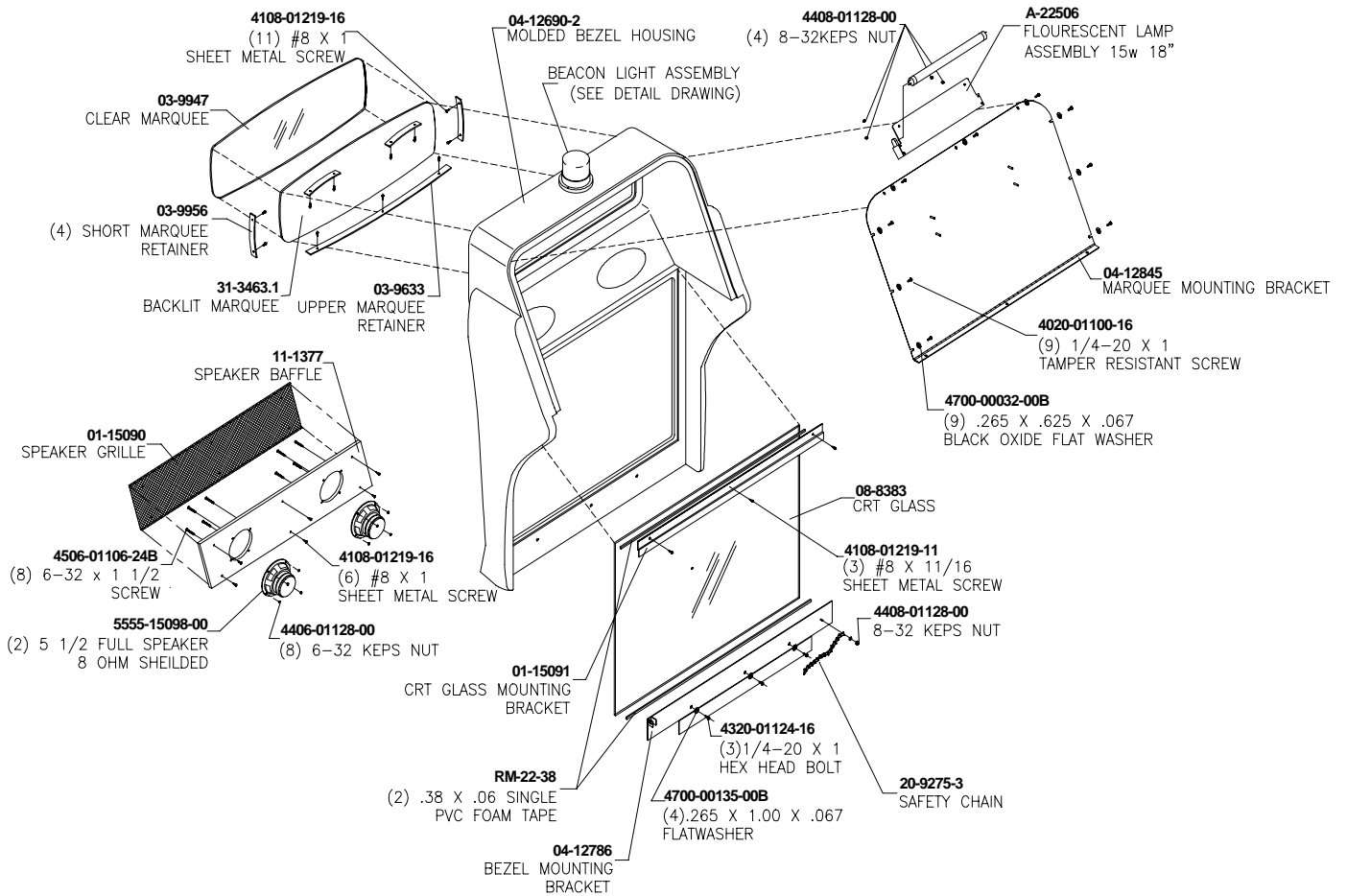
Cabinet Rear View



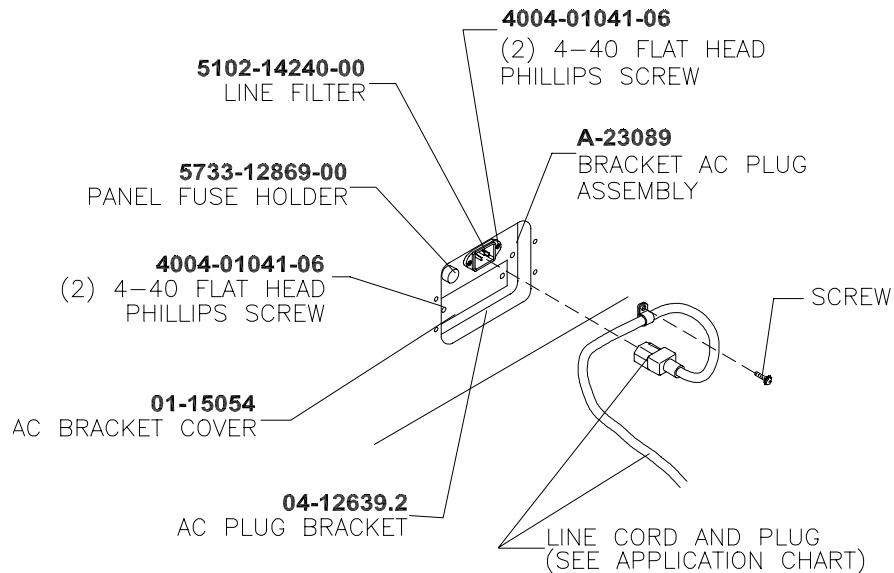
Rear Door Assembly



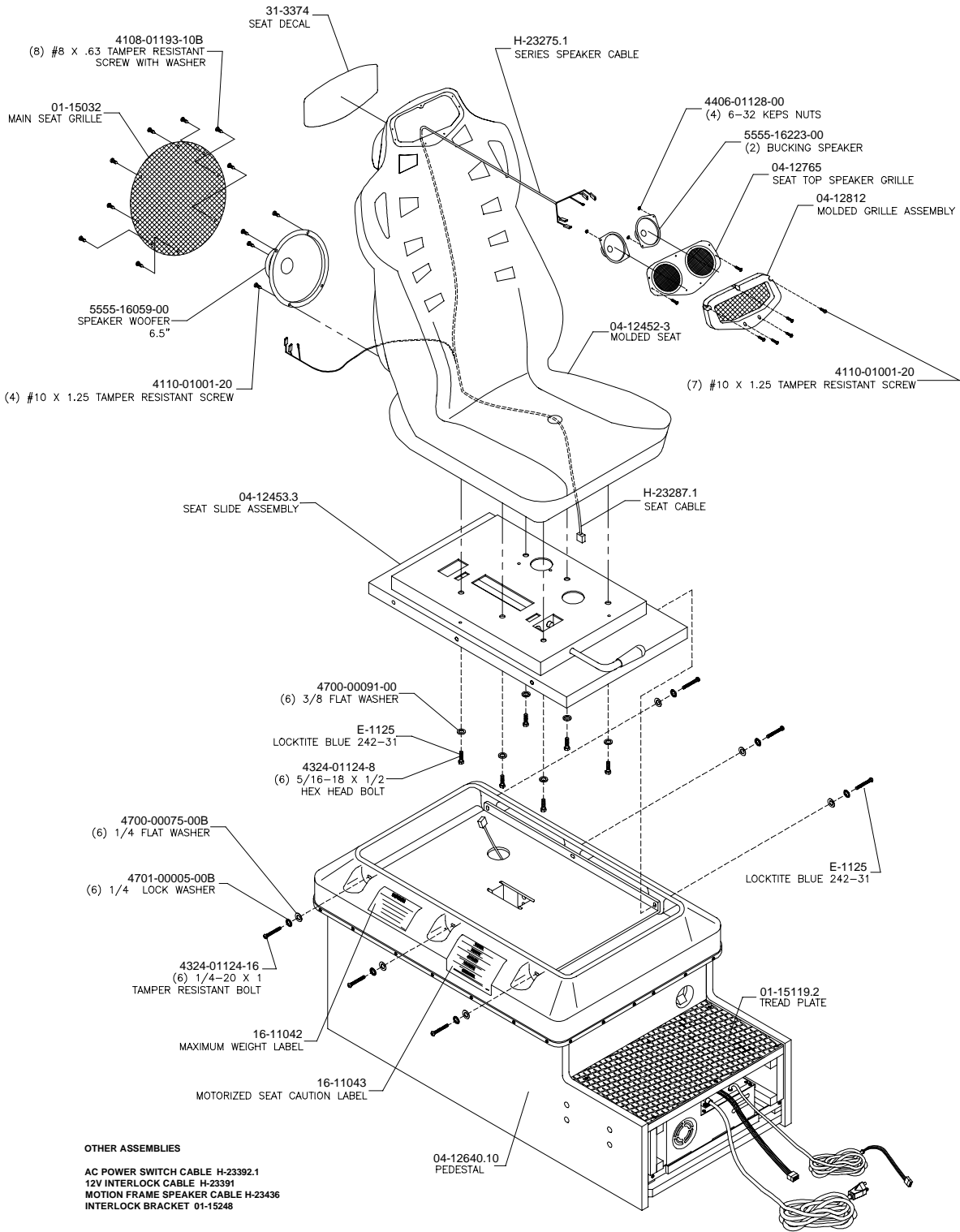
Marquee Assembly



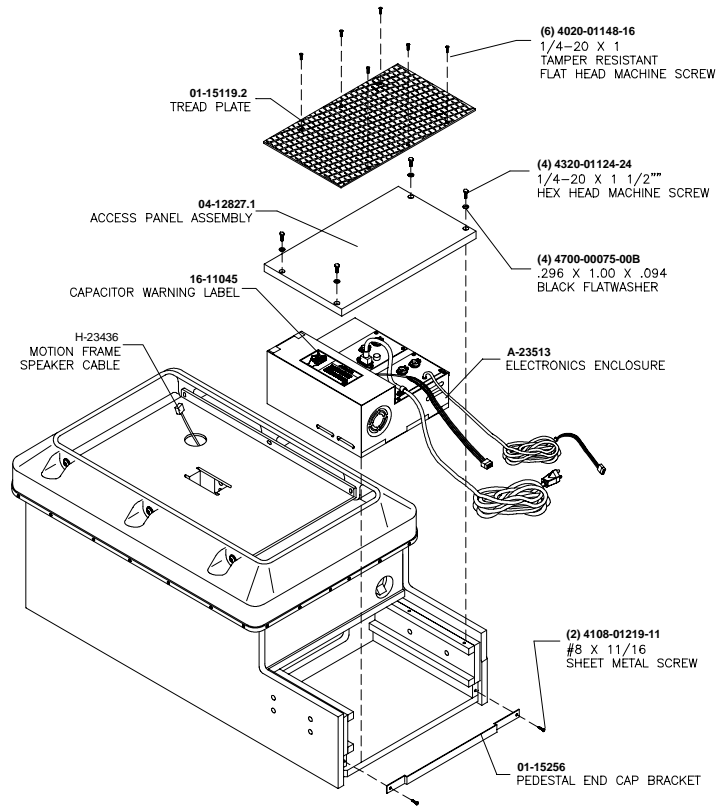
AC Power Assembly



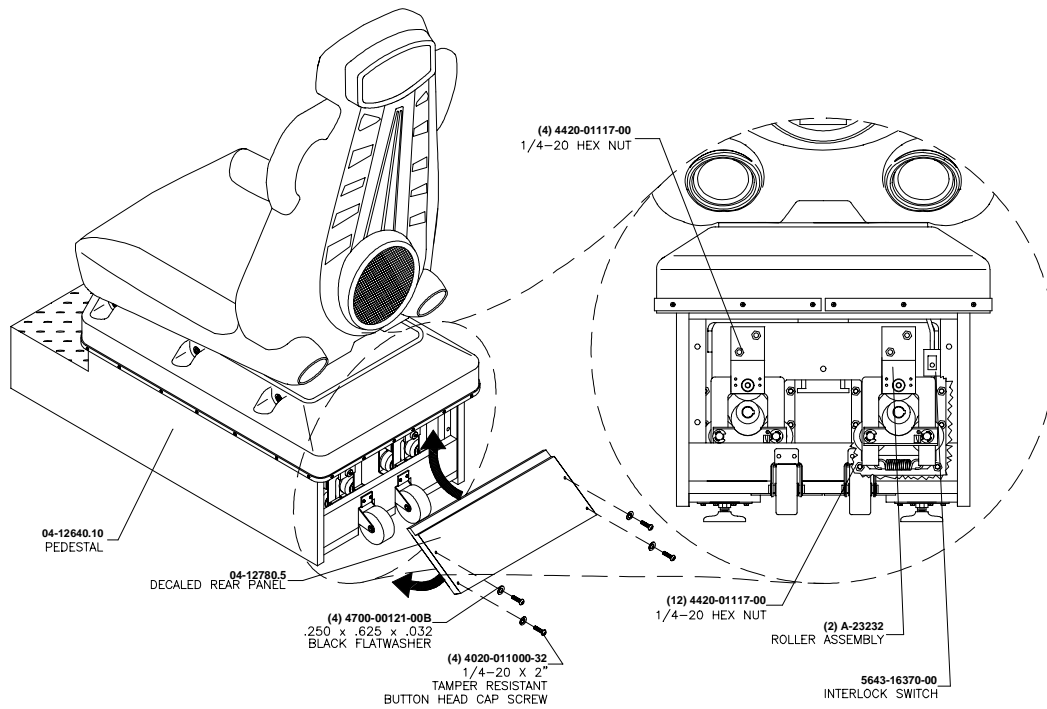
Motion Seat Pedestal Assembly



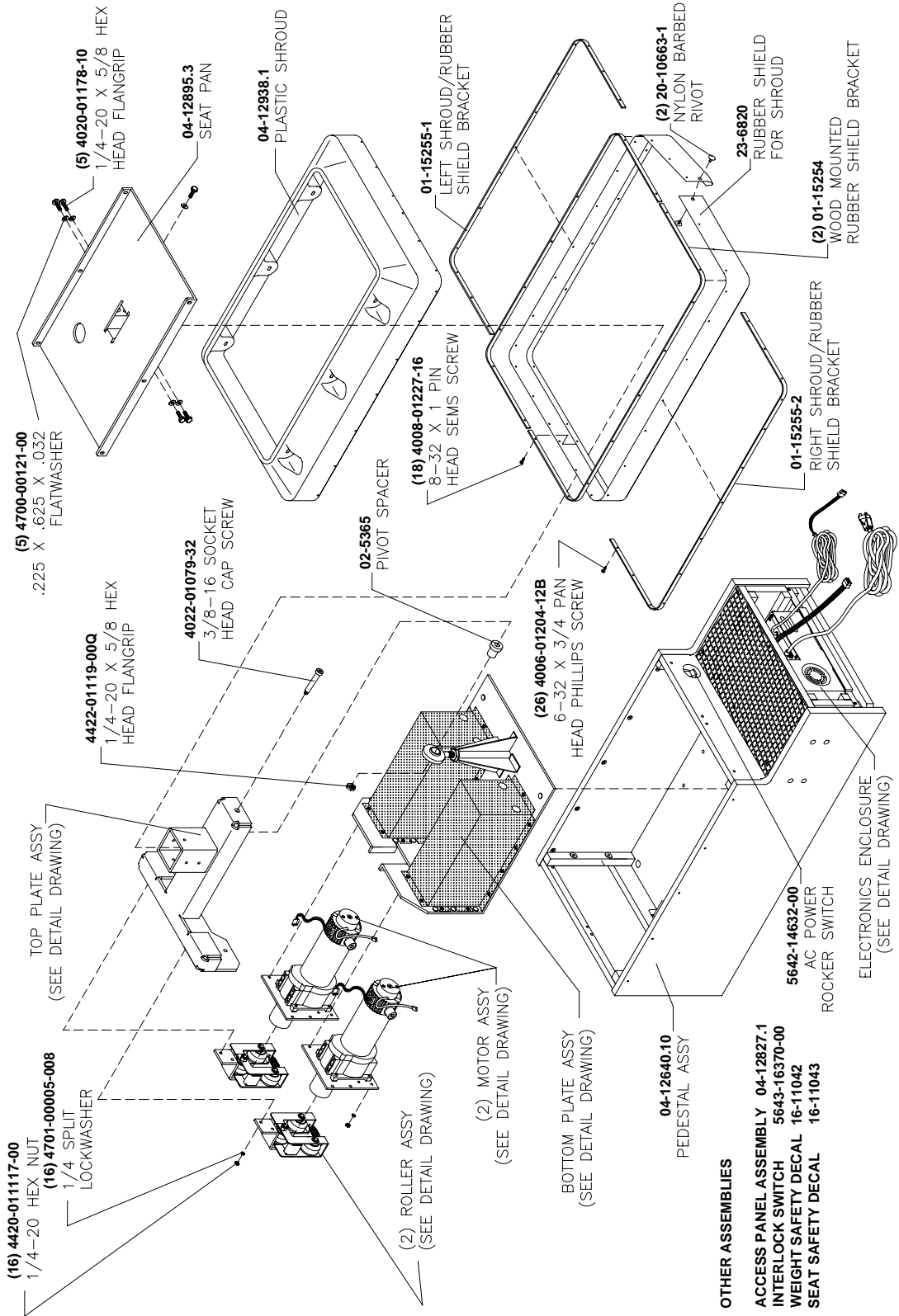
Motion Pedestal Electronics Enclosure Access



Motion Pedestal Rear Access



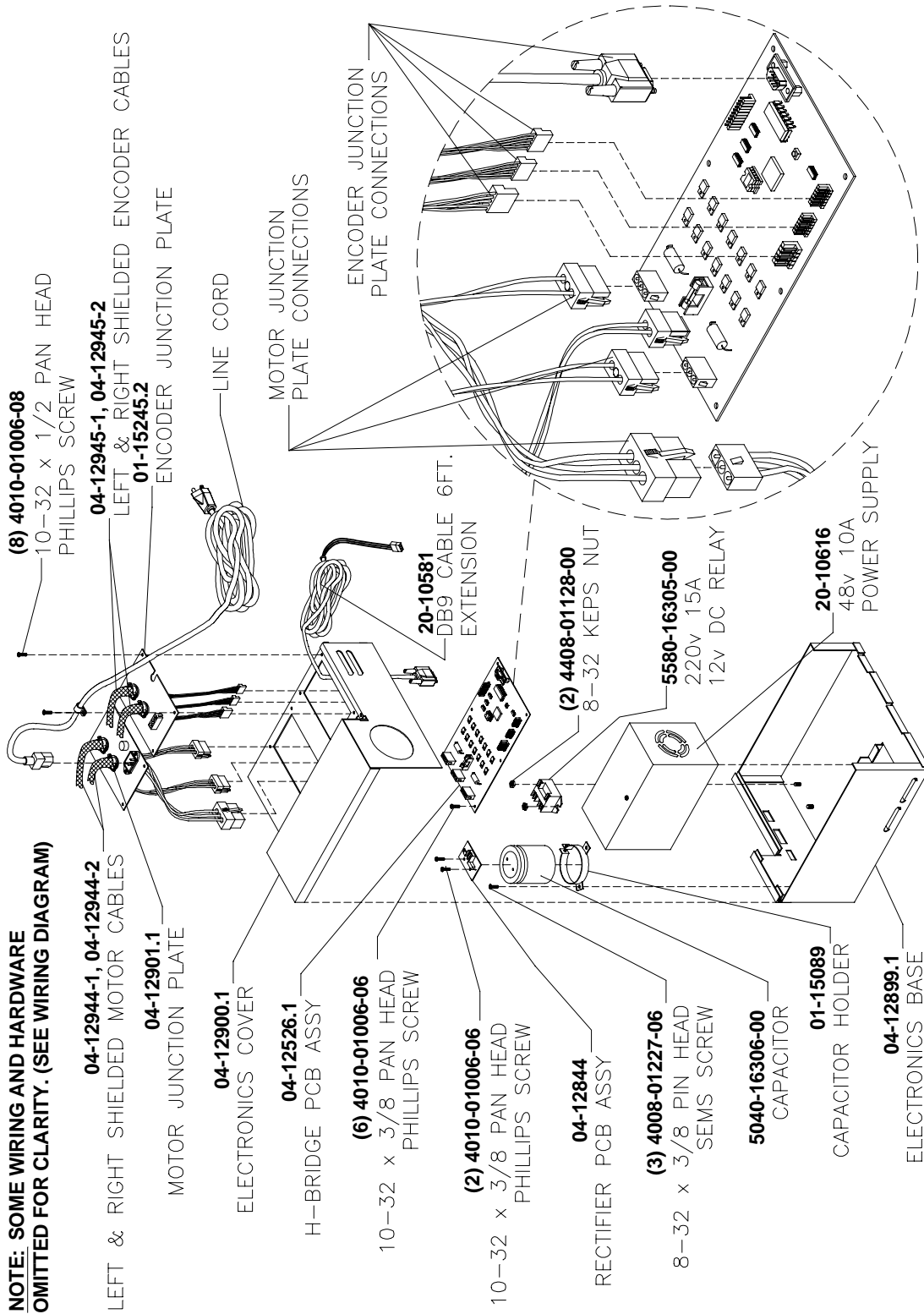
Motion Seat Pedestal Base



OTHER ASSEMBLIES

- ACCESS PANEL ASSEMBLY 04-12827.1
- INTERLOCK SWITCH 5643-16370-00
- WEIGHT SAFETY DECAL 16-11042
- SEAT SAFETY DECAL 16-11043

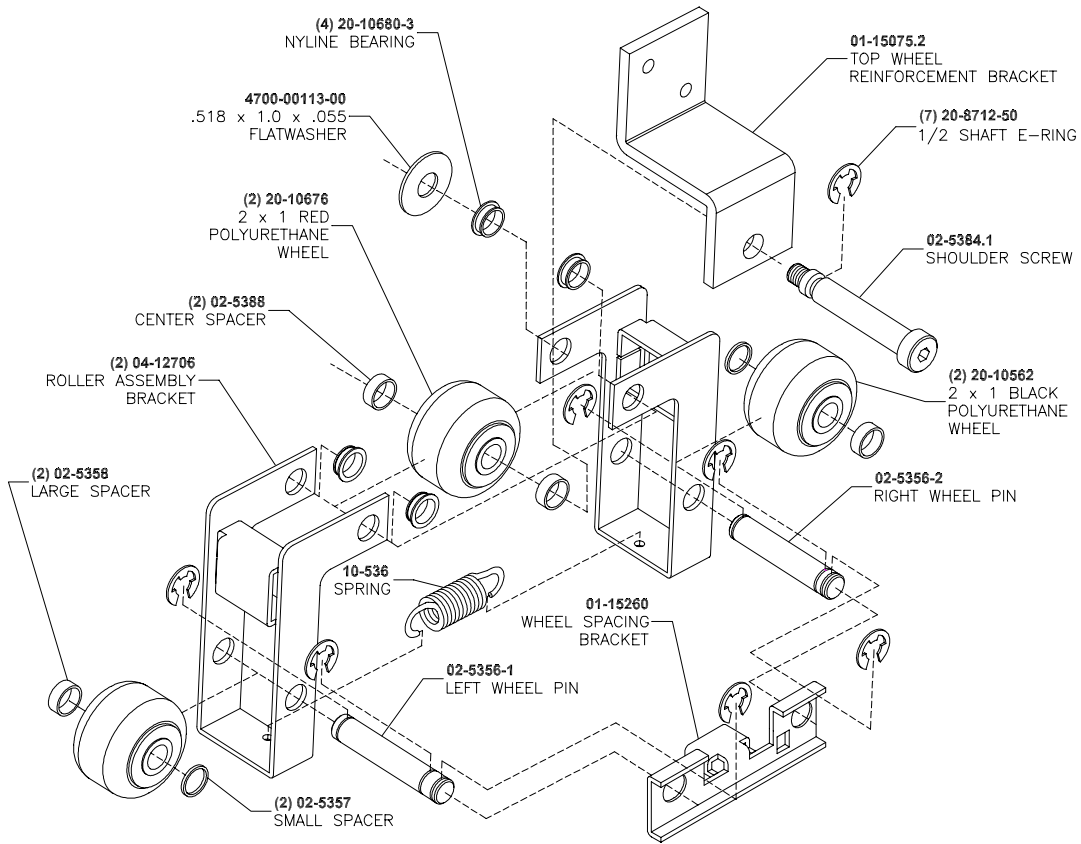
Electronics Enclosure Assembly



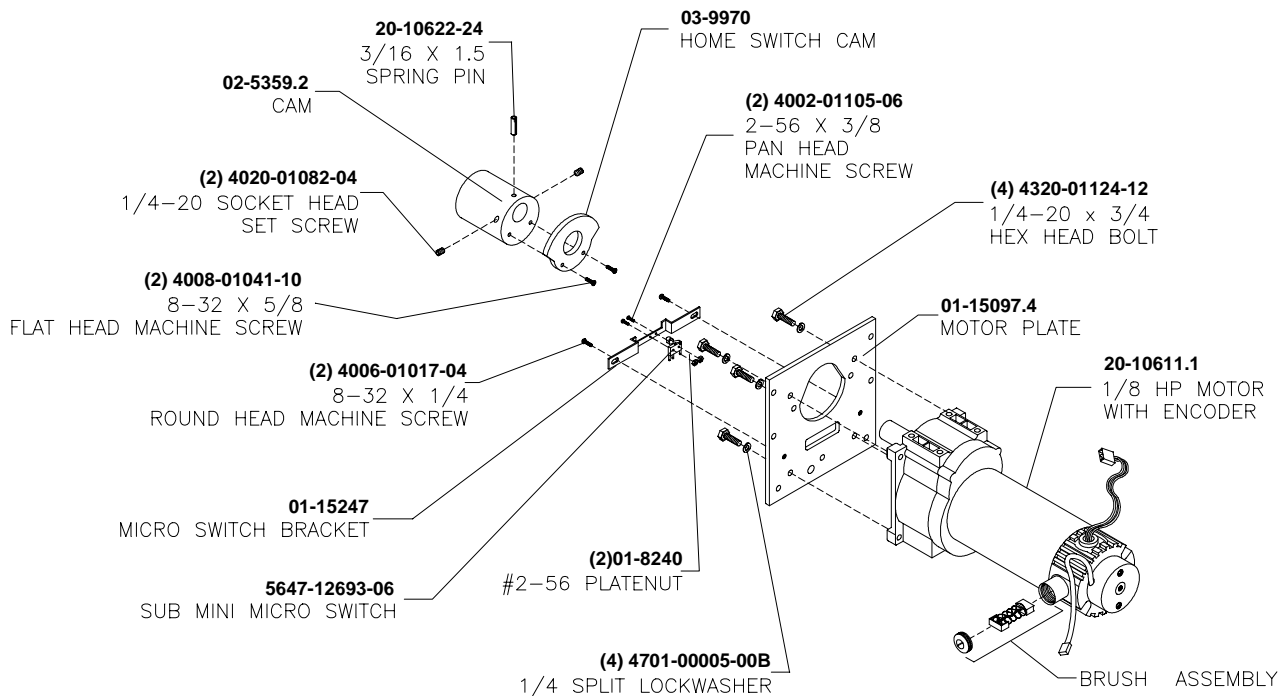
OTHER ASSEMBLIES

- AC CONTACTOR CABLE H-23283
- 48VDC POWER CABLE H-23284
- ENCLOSURE DC CABLE H-23285
- MOTOR DRIVE CABLE H-23504

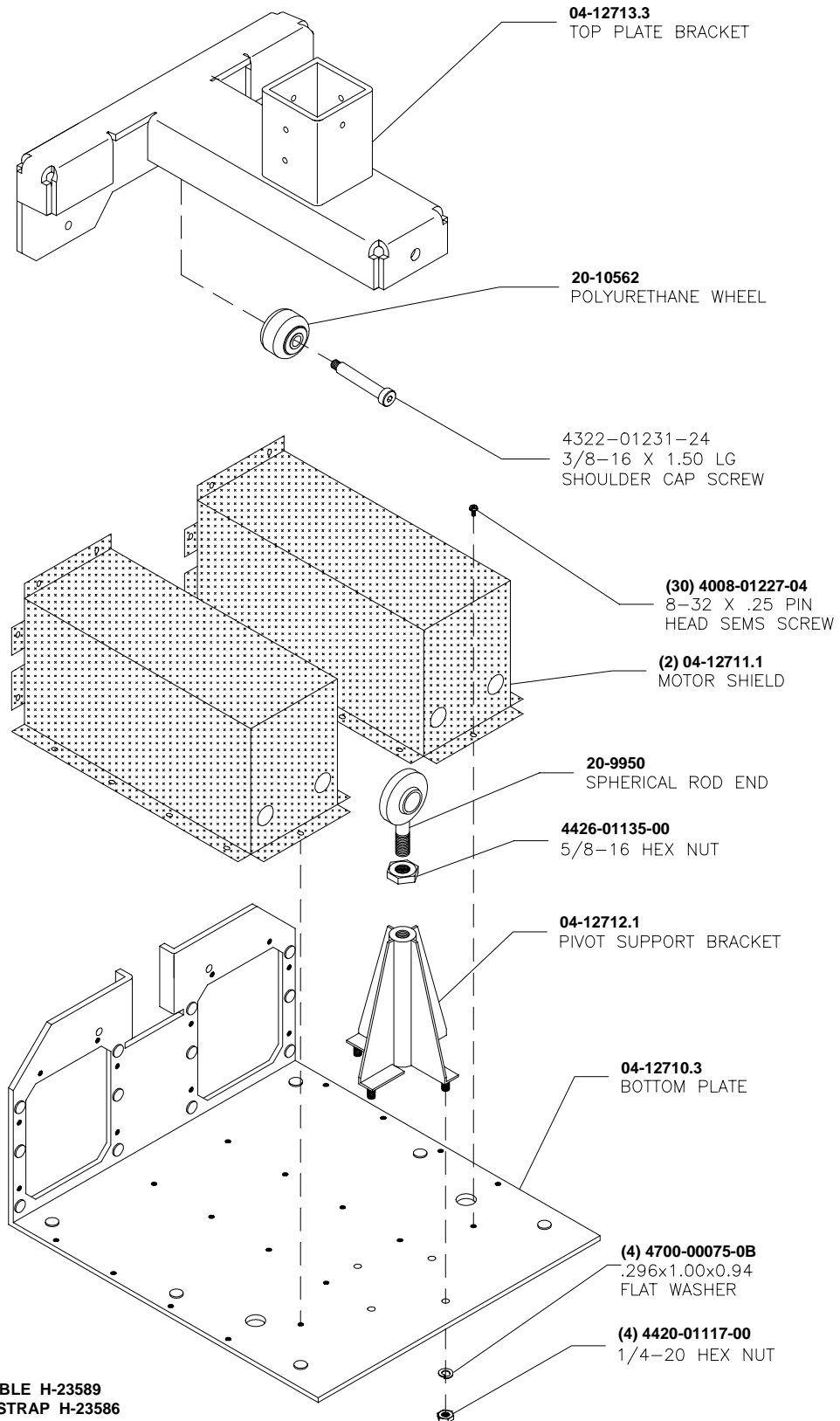
Roller Assembly A-23232



Motor Assembly A-23234



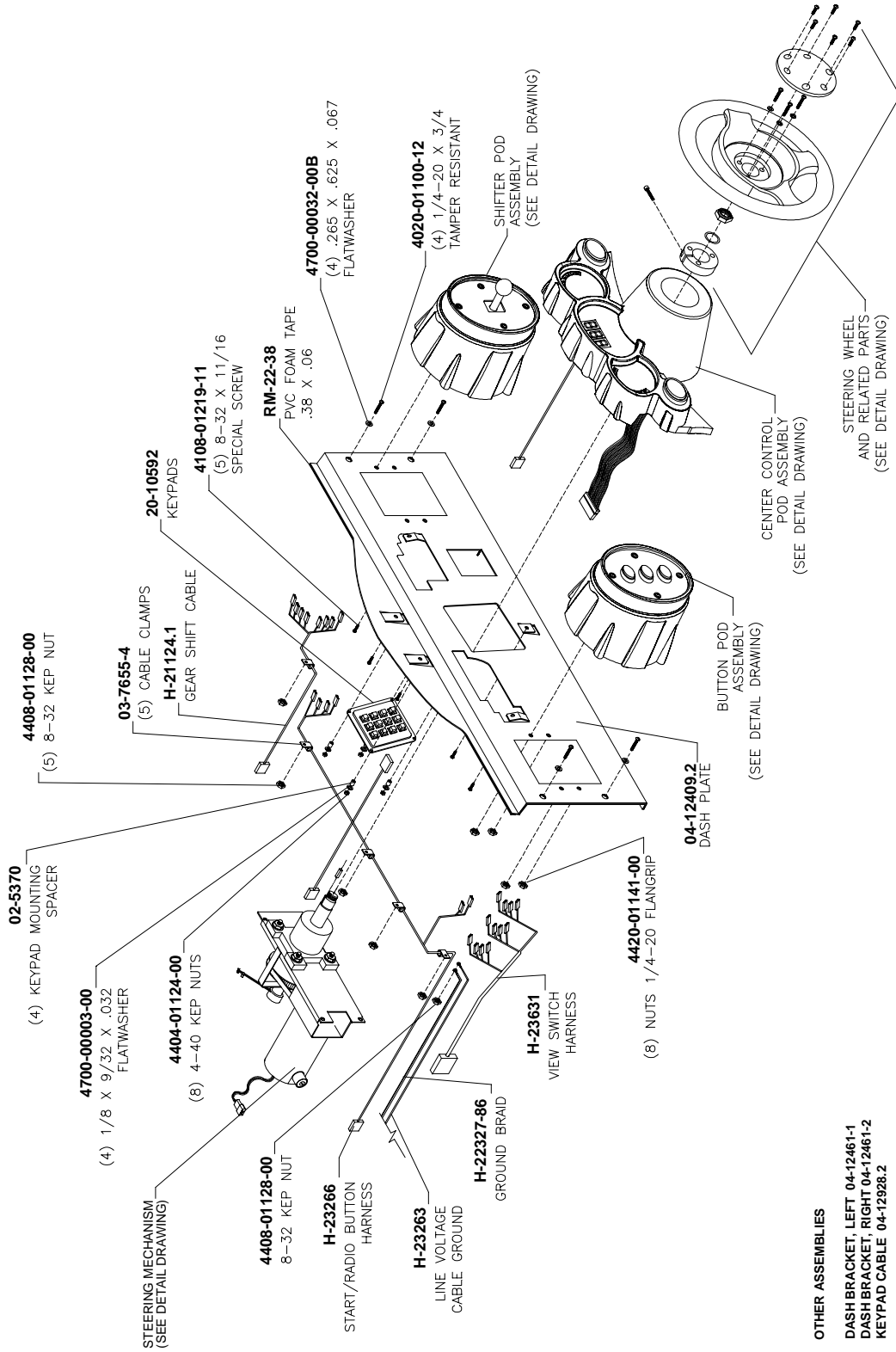
Bottom Plate Support Assembly



OTHER ASSEMBLIES

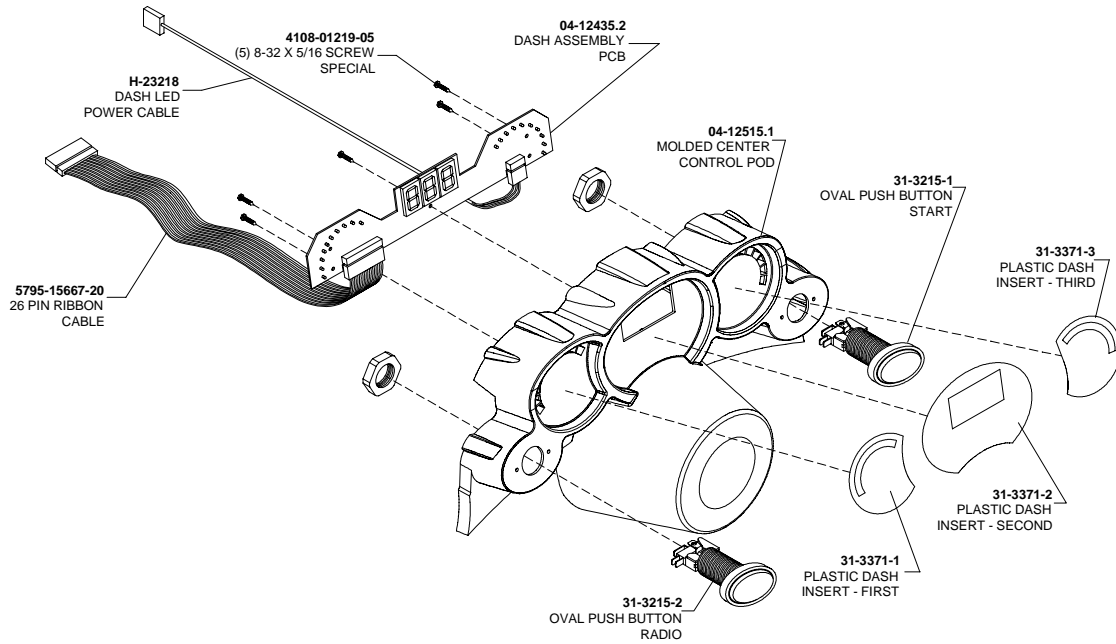
AC INTERCONNECT CABLE H-23589
SEAT PLATE GROUND STRAP H-23586

Dashboard Assembly

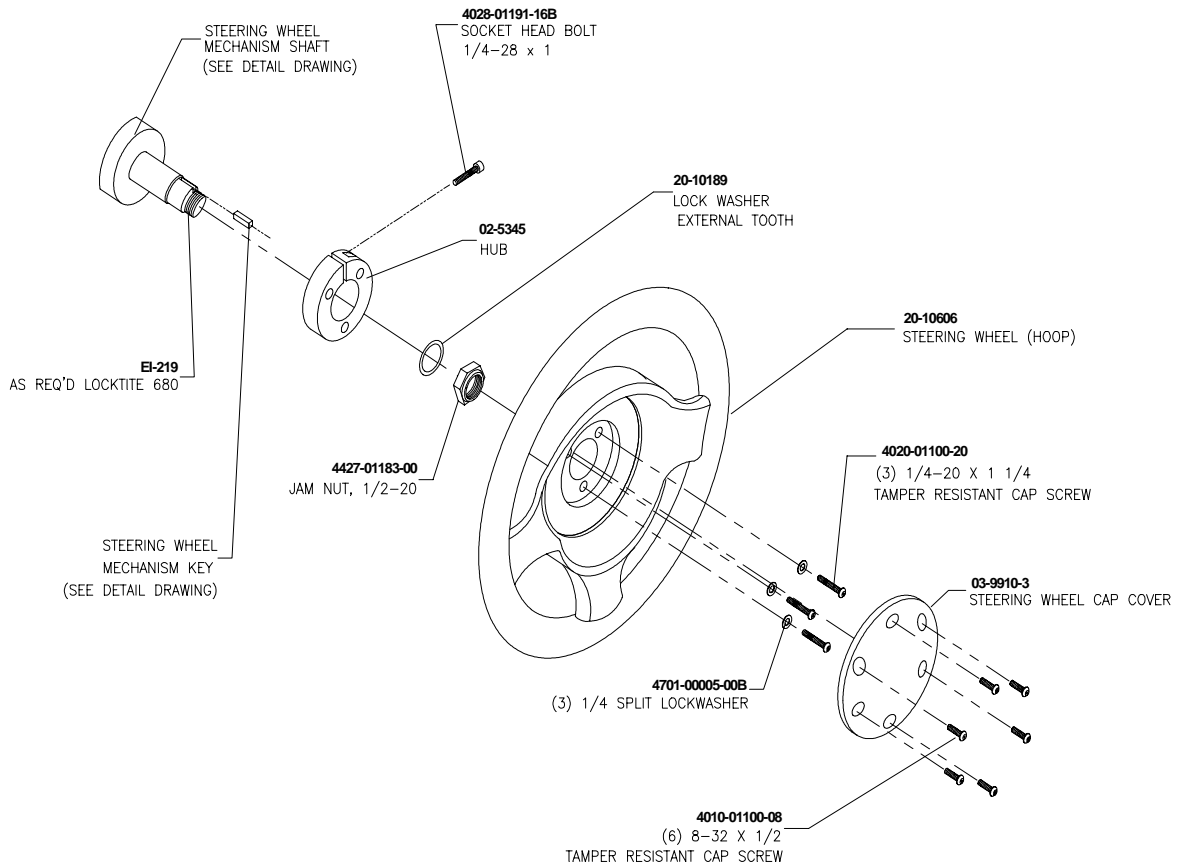


OTHER ASSEMBLIES
 DASHBOARD, LEFT 04-12461-1
 DASHBOARD, RIGHT 04-12461-2
 KEYPAD CABLE 04-12928.2

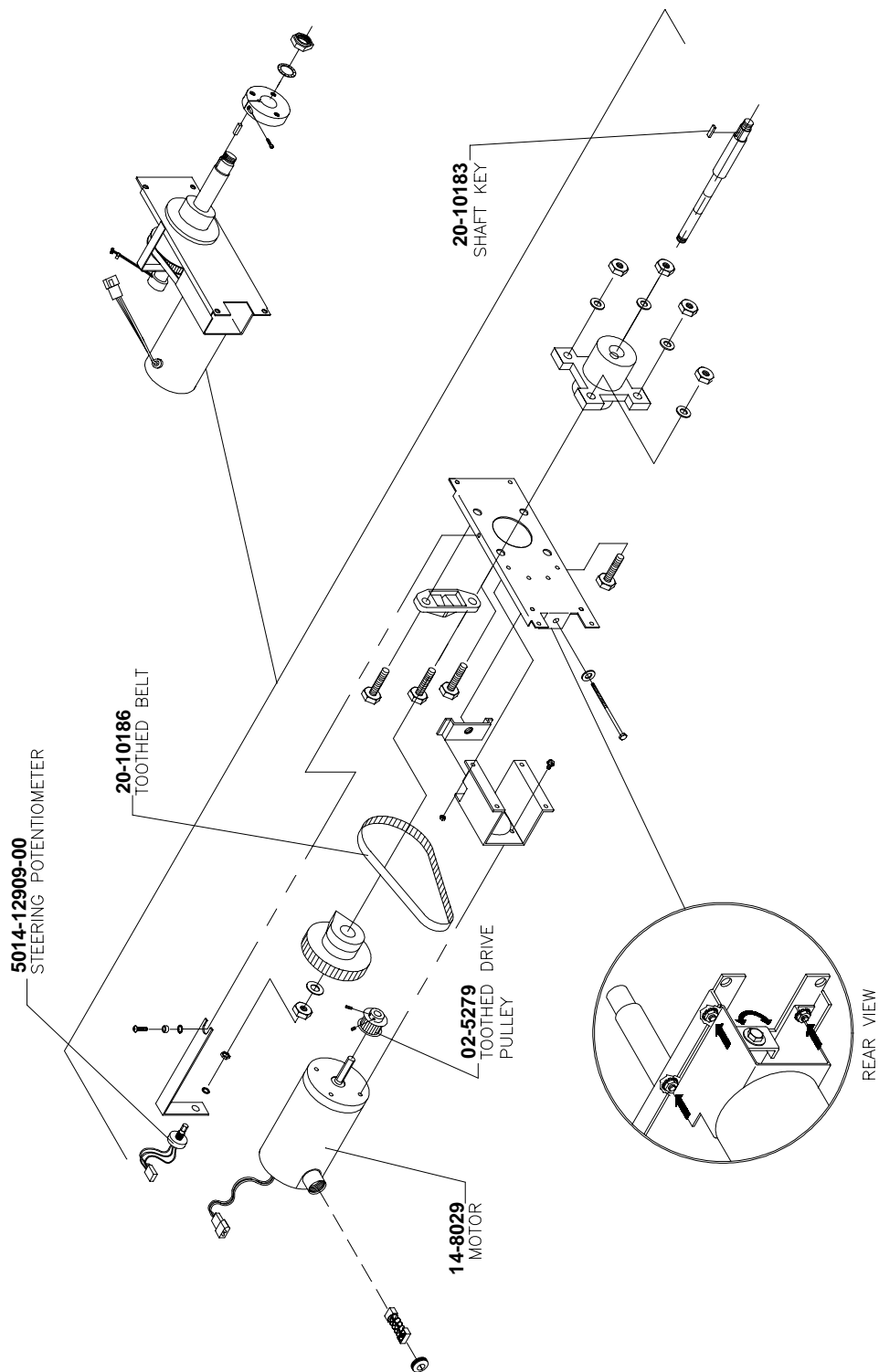
Center Control Pod Assembly



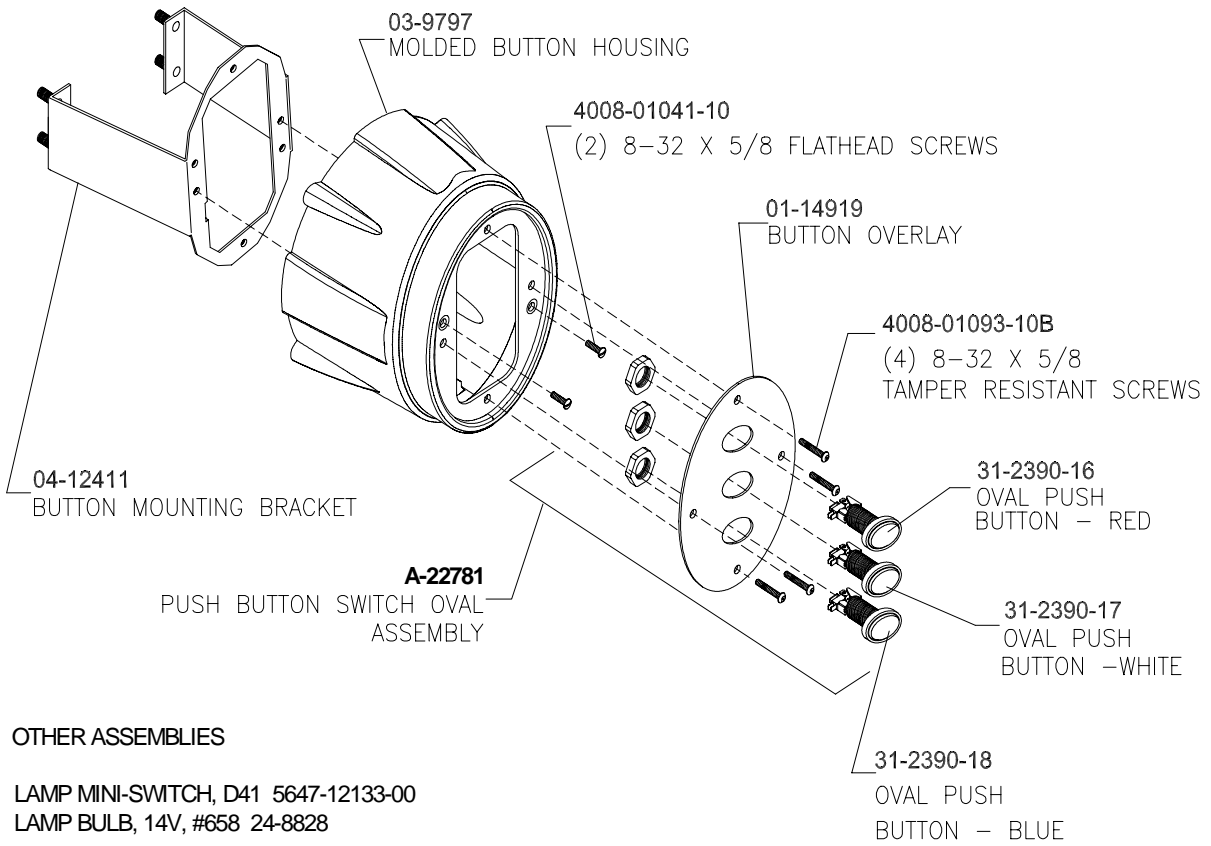
Steering Wheel



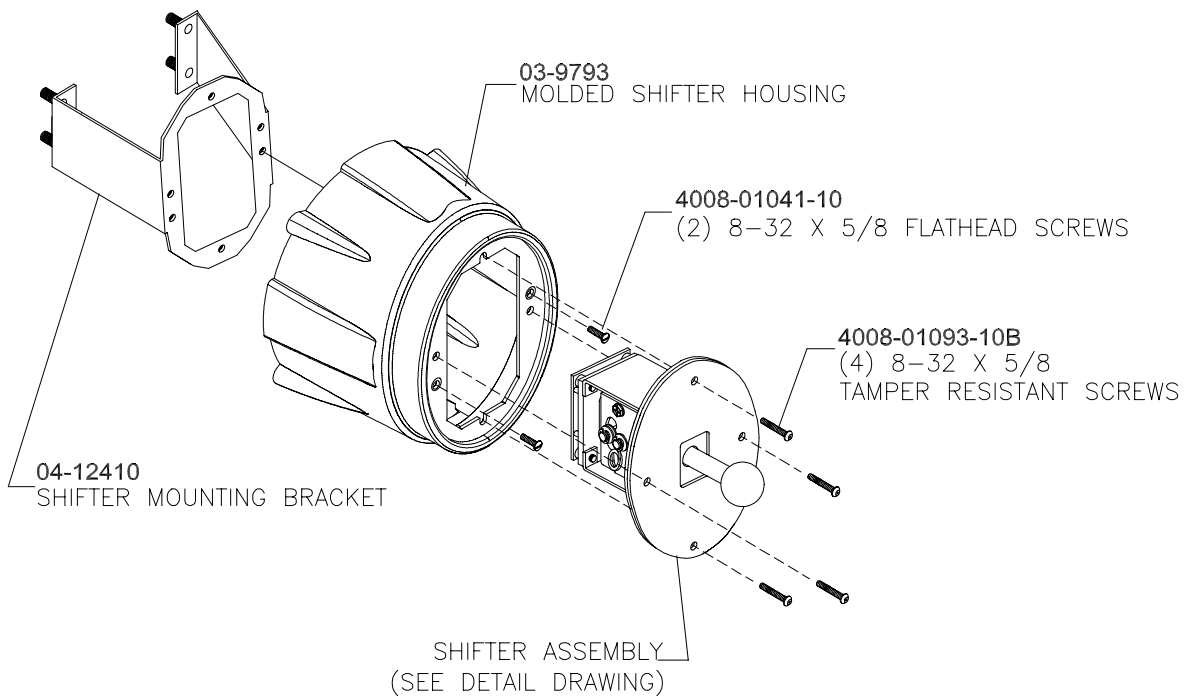
Steering Mechanism 20-10627



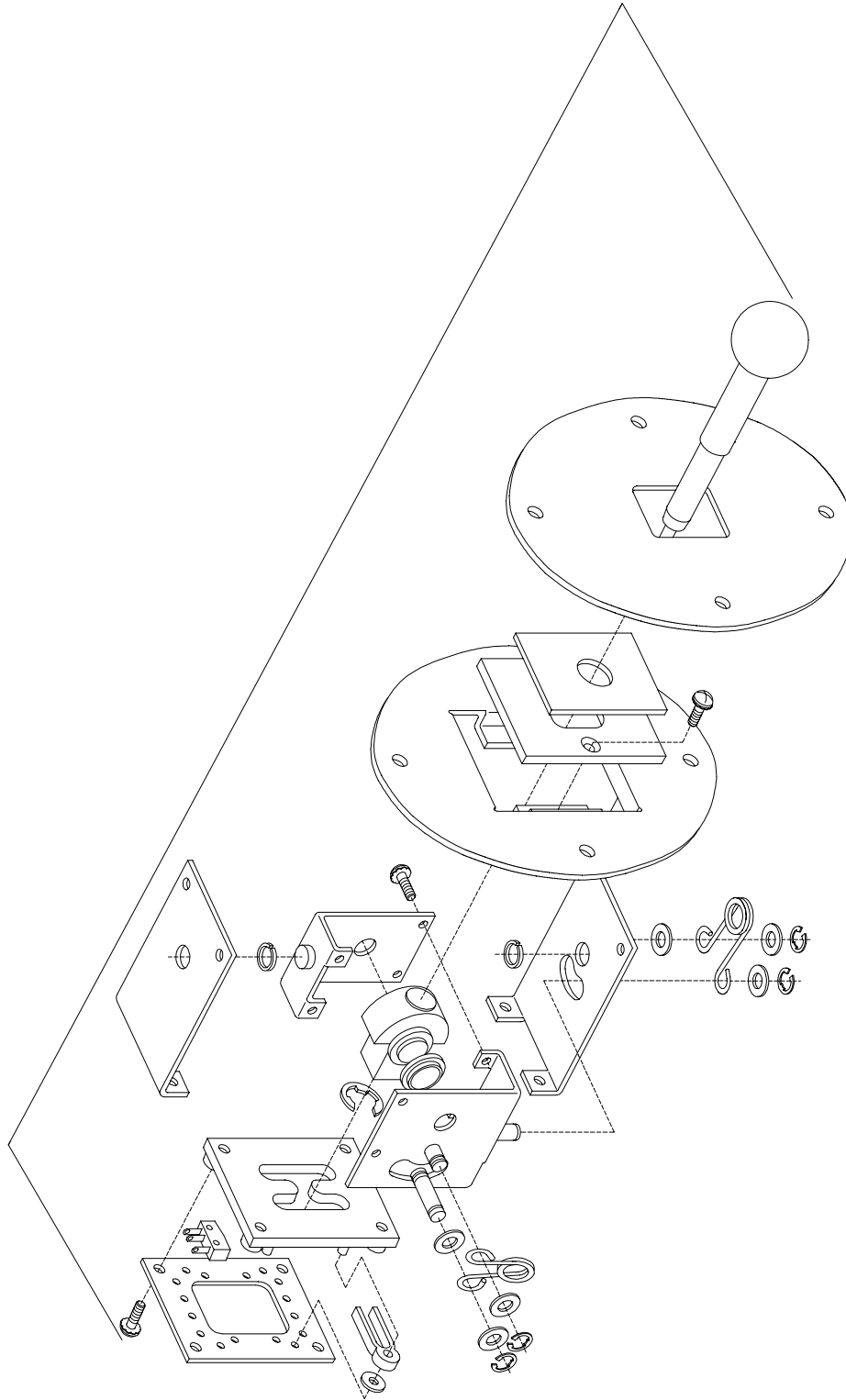
Button Pod Assembly



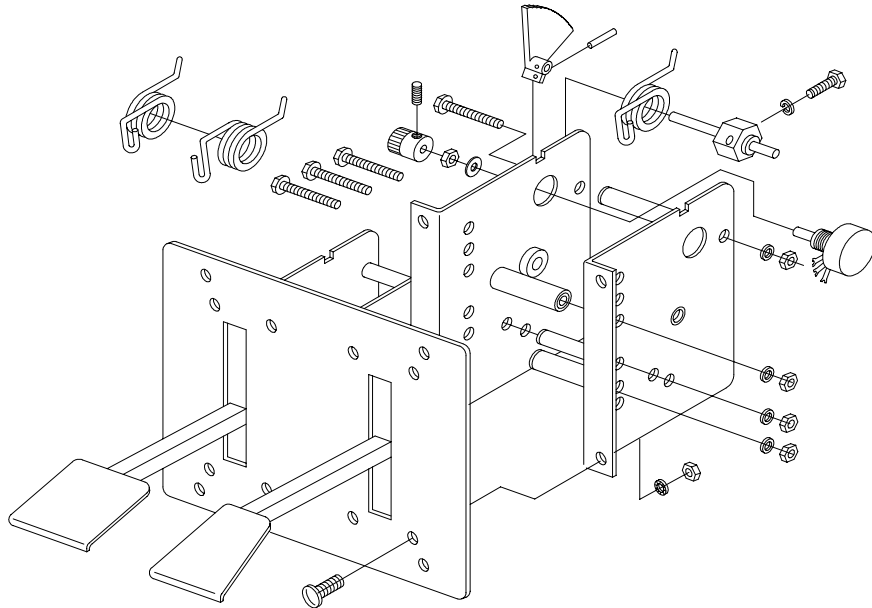
Shifter Pod Assembly



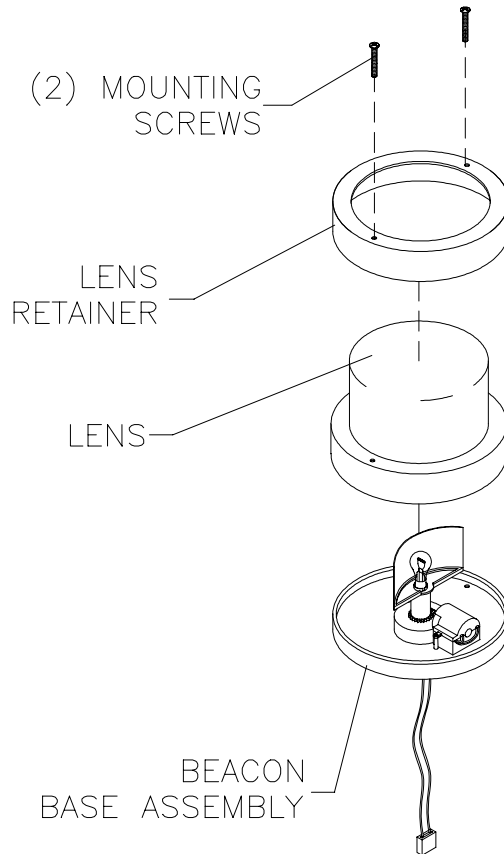
Shifter Assembly 20-10495



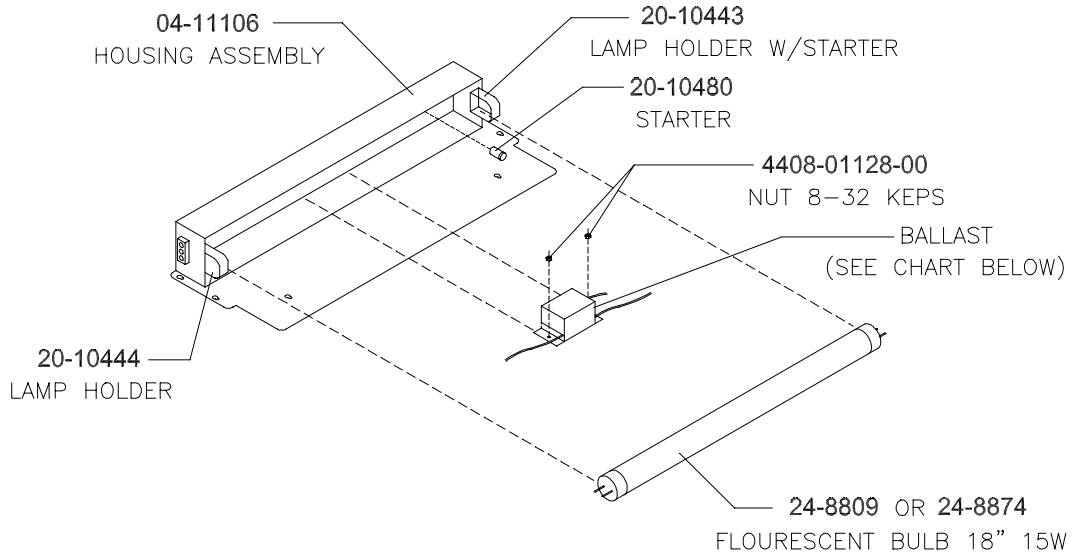
Pedal Assembly 20-10135



Beacon Light Assembly 20-10546

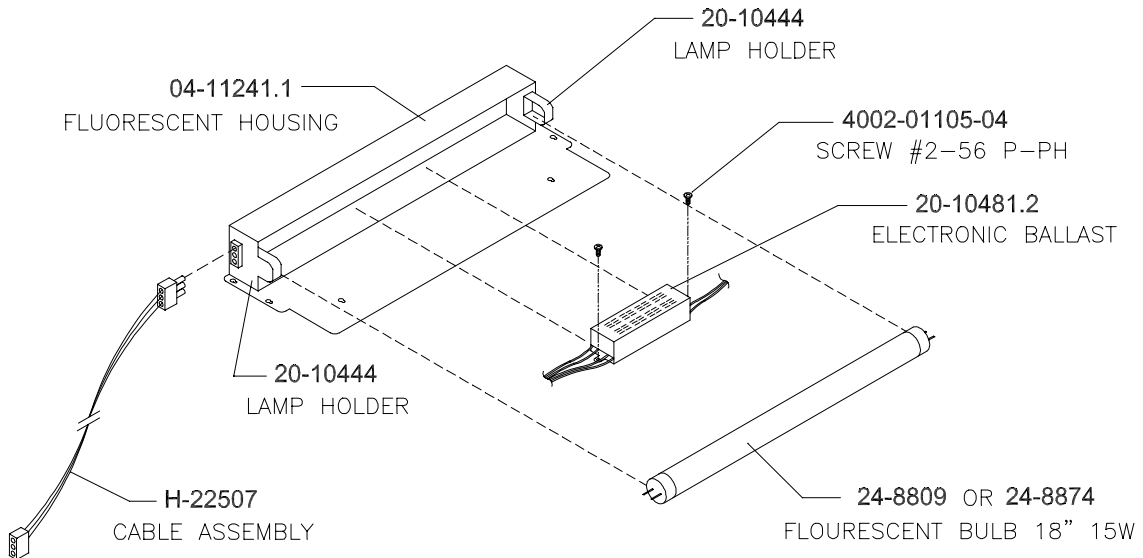


Lamp Assembly A-22506

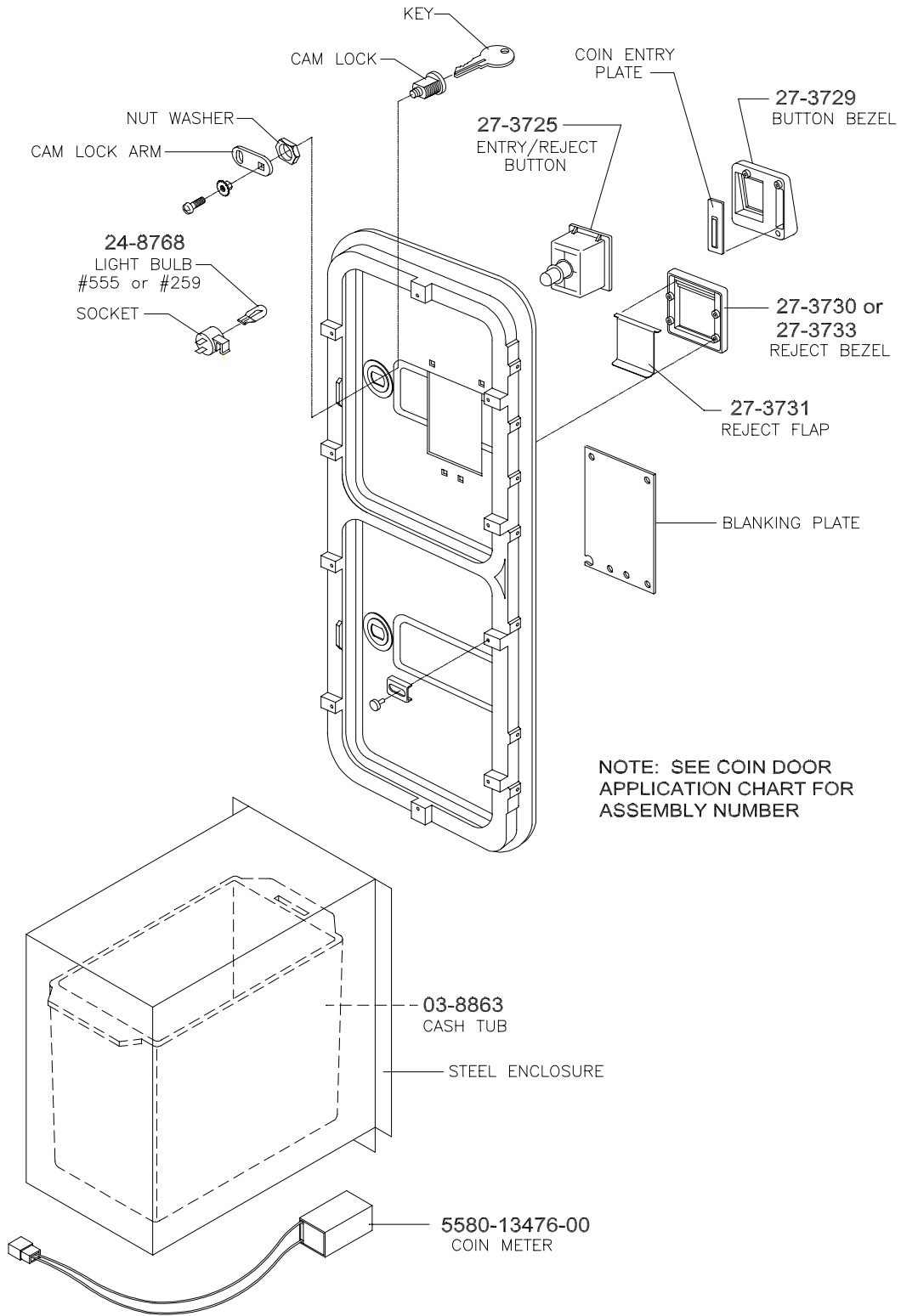


CONVENTIONAL LAMP BALLASTS:

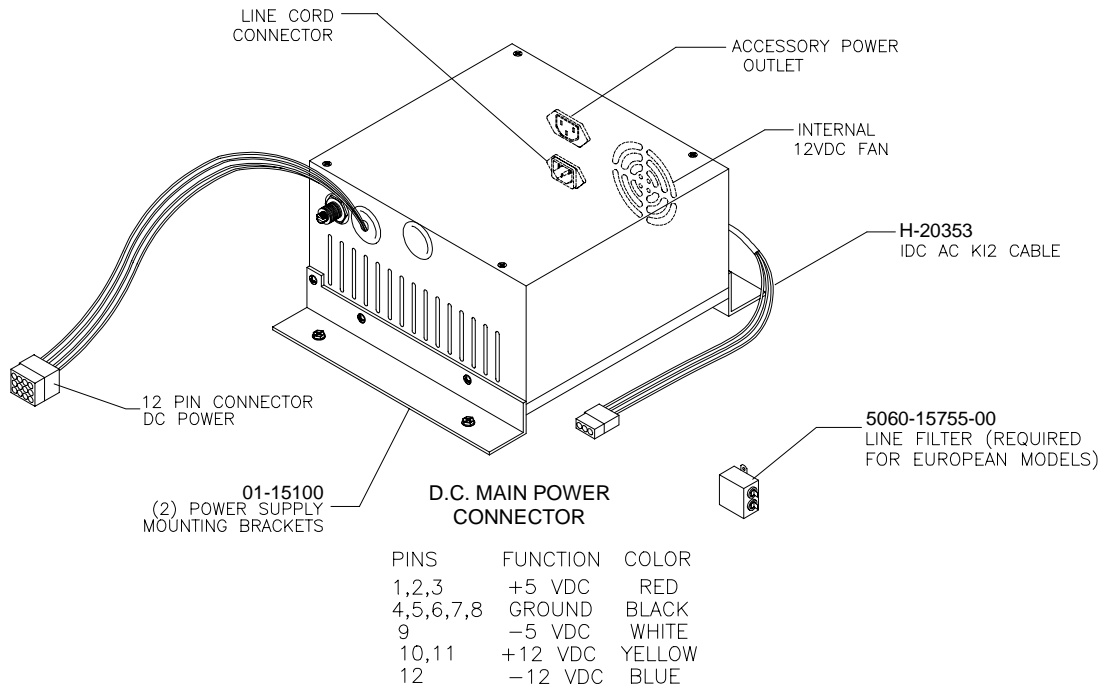
20-10263	100VOLT 50/60 Hz
20-8749-8	120VOLT 60Hz
20-10220	220VOLT 50Hz
20-10384	220VOLT 60Hz
20-10379	230VOLT 50Hz
20-10380	240VOLT 50Hz
20-10236	240VOLT 60Hz



Coin Door Assembly

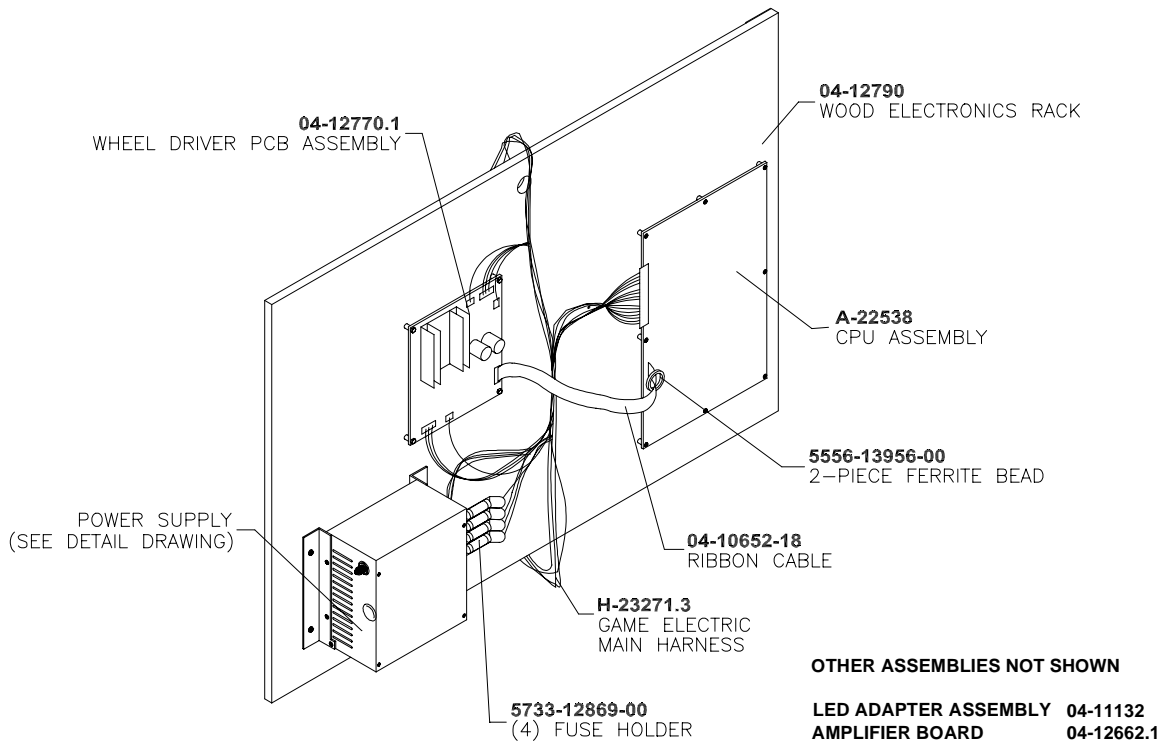


Power Supply 20-10537

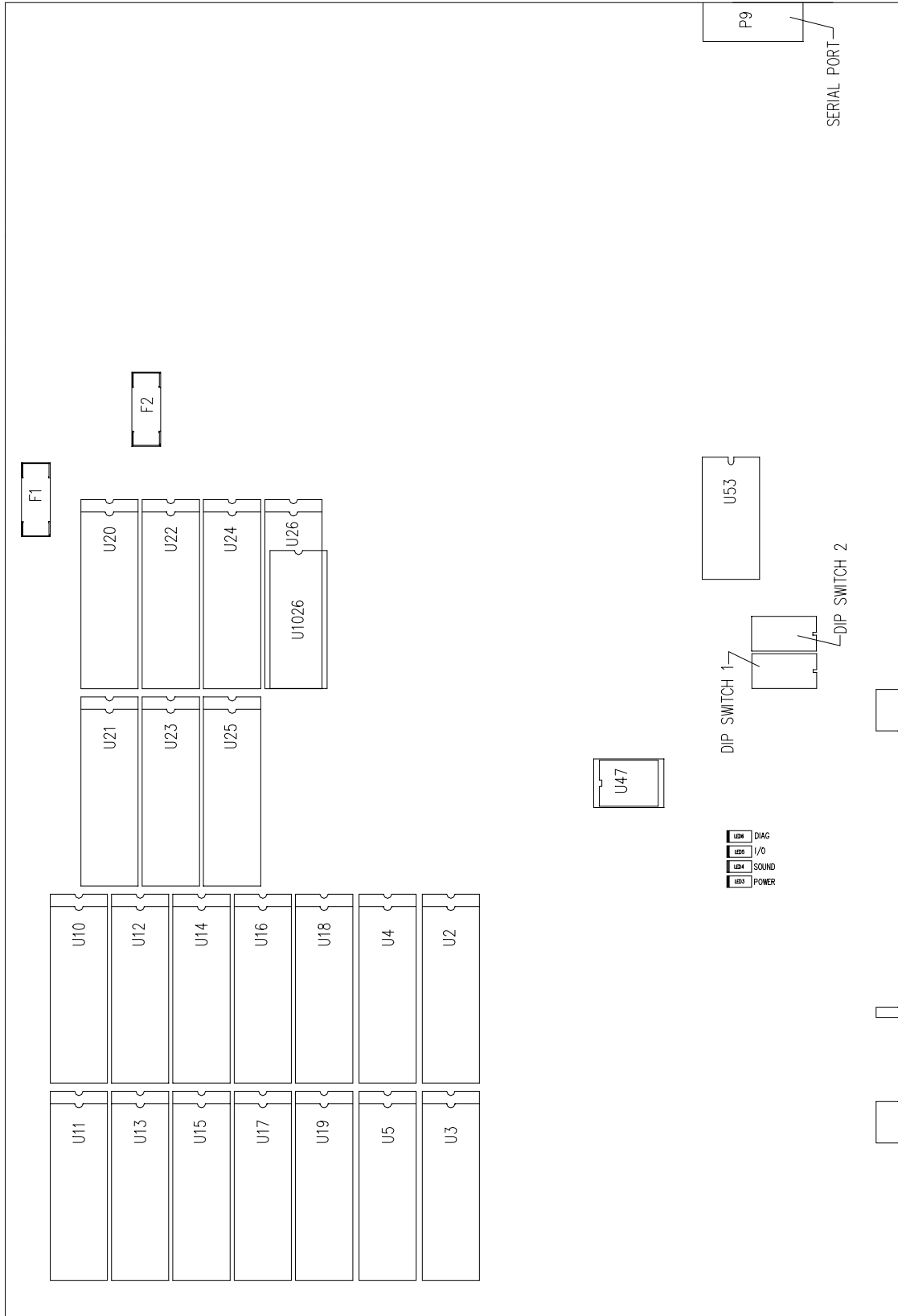


NOTE: Many computer grade power supplies use alternate wire colors. This is acceptable as long as the pinout is correct.

Electronics Assembly A-23332



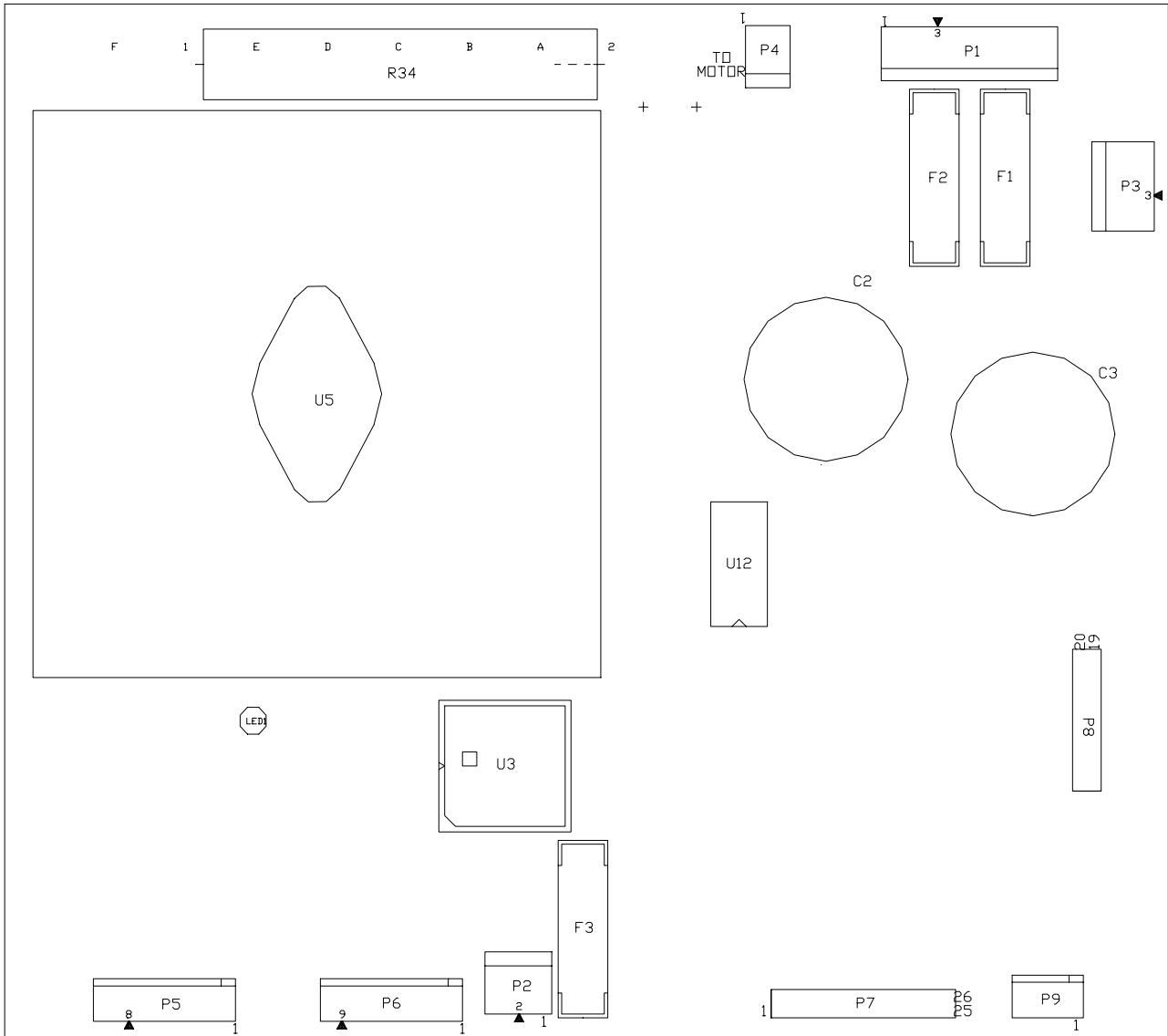
CPU Board Assembly A-22538



Field Replaceable CPU Board Parts

DESIGNATION	PART NUMBER	FUNCTION	DESCRIPTION
U47	5460-15676-00	Config Memory Backup	Module
F1, F2	5735-13853-00	Circuit Protection	2A SB Fuse 5x20mm
U2	A-5341-16431-11	Sounds	EPROM Assembly
U3	A-5341-16431-14	Sounds	EPROM Assembly
U4	A-5341-16431-15	Sounds	EPROM Assembly
U10	A-5341-16431-1	Programming & Images	EPROM Assembly
U11	A-5341-16431-2	Programming & Images	EPROM Assembly
U12	A-5341-16431-12	Programming & Images	EPROM Assembly
U13	A-5341-16431-13	Programming & Images	EPROM Assembly
U14	A-5341-16431-3	Images	EPROM Assembly
U15	A-5341-16431-4	Images	EPROM Assembly
U16	A-5341-16431-5	Images	EPROM Assembly
U17	A-5341-16431-6	Images	EPROM Assembly
U18	A-5341-16431-7	Images	EPROM Assembly
U19	A-5341-16431-8	Images	EPROM Assembly
U22	A-5341-16431-17	Images	EPROM Assembly
U23	A-5341-16431-18	Images	EPROM Assembly
U24	A-5341-16431-19	Images	EPROM Assembly
U25	A-5341-16431-20	Images	EPROM Assembly
U26	5347-16378-00	Memory Backup	Lithium Battery
U53	A-23750	39" Game Instructions	PIC Assembly

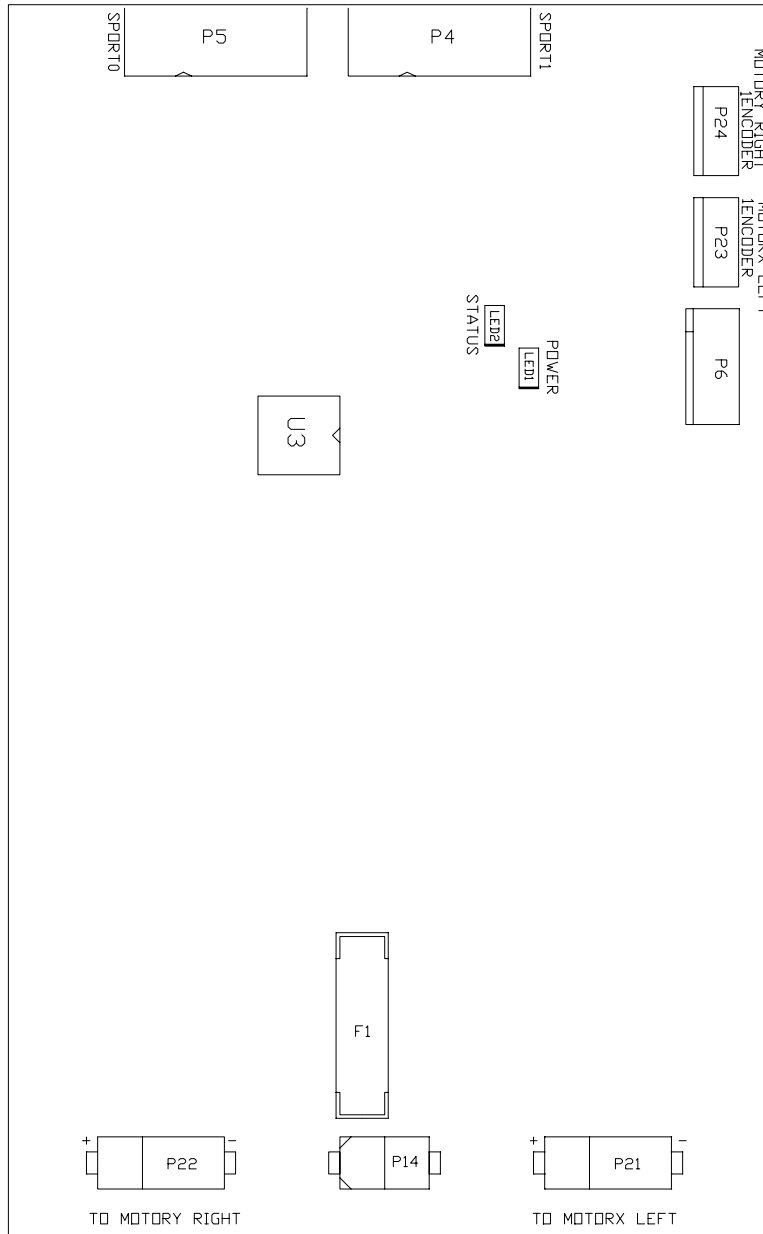
Wheel Driver Board 04-12770.1



Field Replaceable Wheel Driver Board Parts

Description	Part Number	Designation
Fuse 4A SB	5731-14094-00	F1, F2
Fuse .63A FB	5731-15627-00	F3
PLD Assy Primary	A-23362	U3
PLD Assy Secondary	A-23363	U3

H-Bridge Board 04-12526.1



Field Replaceable H-Bridge Board Parts

Description	Part Number	Designation
Fuse 5x20mm, T6.3A, 250V	5731-14529-00	F1
PLD Assy Primary	A-23446	U3

Supplementary Parts

Power & Protection	
AC Line Filter, 5A, 250V	5060-15755-00
AC Line Filter, 6A, 250V	5102-14240-00
Ferrite Bead	5556-13956-00

Cables	
IDC Cable	H-20353
26-Pin Ribbon Cable	5795-15667-48
AC Interconnect Cable	H-23355
AC Line Voltage	H-23272
Beacon Light Cable	H-23123
Braided Ground Cable	H-22327-86
Control Panel Cable	H-22094
Dash Umbilical Cable	H-23273.3
Fire Wire Linking Cable	20-10536-16
High Current Power Cable	H-23371
Main Harness JAMMA Cable	H-23271.4
Bill Acceptor Adapter Cable	H-23639

Documentation	
Caster Installation Instructions	16- 11010
Operators Manual	16-40076-101
Product Registration Card	16-10650

Tools & Game Installation Hardware	
Bolt, hex head, ¼-20 x 1	4320-01124-16
Bulb, #555, 6.3V, .25 Amps	24-8768
Bulb, #161	24-8840
Fuse, SB, 4A, 250V	5731-06314-00
Fuse, SB, 1A, 250V	5731-06569-00
Fuse, SB, 7A, 250V	5731-09432-00
Fuse, SB, 3A, 250V	5731-10356-00
Fuse, SB, 4A, 5x20mm	5731-14094-00
Fuse, 5x20mm, T2.5A, 250V	5731-14532-00
Fuse, FB, .63A, 250V, 5x20mm	5731-15627-00
Screw, SMS, #8 x 1-1/2 TRX	4108-01160-24B
Screw, Tamper-Resistant, ¼-20 x 1-1/4	4020-01100-20
Screw, SMS, #6 x 2, P-PH-S	4106-01018-32
Screw, Tamper-Resistant, ¼-20 x 2-1/2	4020-01100-40
Torx key, T-25, Long arm	20-10144
Torx key, T-10, Long arm	20-9642
Hex L-Key, 5/32, Tamper-Resistant	20-10542
Torx Key, T-20	20-9620
Torx Key, T-27	20-10140
Washer, Flat, .265 x .626 x .067	4700-00135-00B
Washer, Flat, .265 x .750 x .067	4700-00033-00
Washer, Lock, ¼, split	4701-00005-00
Washer, Lock, ¼-20, internal tooth	4702-00014-00B

Transformer Application Chart			
Part Number	5610-16292-00	5610-16292-01	5610-16292-00
Voltage & Country			
120 VAC USA	•		
230 VAC Europe		•	
100 VAC Japan			•

Line Cord Application Chart							
Part Number	5850-14699-01	5850-14699-02	5850-14699-03	5850-14699-00	5850-14699-04	5850-14699-05	5850-14699-06
Country							
USA	•						
UK			•				
Italy				•			
Japan							•
New Zealand						•	
Germany		•					
Spain		•					
Denmark		•					
Finland		•					
Holland		•					
Norway		•					
Switzerland					•		
Hungary		•					
Canada	•						
Austria		•					
France		•					
Australia						•	
Belgium		•					

Coin Door Application Chart																		
Part Number	09-96023-																	
	02	03	04	06	07	09	11	13	14	15	17	18	20	22	23	24	33	
Country																		
USA																		•
UK (09-80000)																		
Italy									•									
Japan										•								
New Zealand											•							
Germany	•																	
Spain													•					
Denmark														•				
Finland							•											
Holland								•										
Norway												•						
Switzerland														•				
Hungary															•			
Canada																	•	
Austria		•																
France			•															
Australia				•														
Belgium					•													